

# APPLICATION NOTE



# SAFETY

## IR TEMPERATURE MEASUREMENT ON THE PLANING LINE

### FOR FIRE PROTECTION AND QUALITY CONTROL



Wood  
industry



Fire  
prevention



Quality  
control

### Customer requests

Fires in sawmills and other forestry product plants are a **real threat!** There have been nearly **80 fires** in these production facilities in the **last 5 years** (as of 2020) in Germany, Austria and Switzerland alone. At the Austrian company **Binderholz GmbH**, various products are machined using planing machines. During the production process, **excessive friction** can generate heat, which can cause **shavings to ignite** and cause a fire. The company was looking for a solution to **prevent the risk of fire**.

### Solution by Optris

To avoid the risk of fire, Optris installed Infrared temperature monitoring systems across the planing line. This system contains the optris **infrared cameras (PI 400 and PI 640)** and the license-free **software optris PIX Connect**. The compact design of the cameras is a major advantage for the application and allowed **quick and easy installation** of the system.

#### Details:

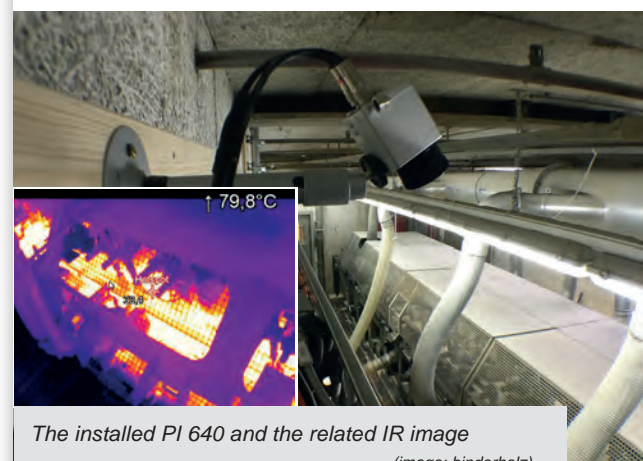
- Robust & compact design (IP64)
- Up to 125 Hz measurement
- Network connection
- Automatic hotspot detection with alarm output
- Multiple cameras visible on one software screen simultaneously
- Display infrared images on a standard PC or with IRmobile App on a mobile device
- Withstands harsh environments
- Easy to install, even in tight spaces
- Different optics available
- Self-monitoring system (fail-safe signal)
- Camera resolution of 382 x 288 pixels or 640 x 480 pixels
- Various optional accessories available like CoolingJacket or air purge

### Further advantages

The Optris cameras are also used for **quality control** in this application. Depending on the contact pressure of the stop rail, the wood surface can likewise heat up considerably – discoloration or even scorch marks are then the results. By **monitoring the wood surface** temperature by the Optris cameras directly in the machine such quality defects can be detected early and the **scrap rate** can be **reduced significantly**.



Monitoring the process via a large live monitor  
(image: binderholz)



The installed PI 640 and the related IR image  
(image: binderholz)



Optimal for use in the  
application field of fire prevention

#### Follow us on:

 [linkedin.com/company/optris](https://www.linkedin.com/company/optris)

 [twitter.com/optris](https://twitter.com/optris)

 [youtube.com/c/OptrisEN](https://www.youtube.com/c/OptrisEN)

 [facebook.com/optris.gmbh](https://www.facebook.com/optris.gmbh)



 **optris**  
infrared measurements

Phone: +43 660 714 6600  
Email: [Christian.Linhart@optris.de](mailto:Christian.Linhart@optris.de)  
[www.optris.global](http://www.optris.global)

Ing. Christian Linhart –  
Optris Application Specialist